

# Rain Barrel Installation Guide



## Step 1 - Collect your tools.

You'll need:

- A rain barrel diverter
- Hack saw
- Straight edge (a T-square works great)
- Marker
- Tin snips
- Screw driver (including one which can remove the screws from the wraps or braces which currently attach your downspout to your house).

## Step 2 - Location!

Determine which downspout is ideal for connecting your rain barrel.

When selecting a downspout, you may want to consider the following:

- Your barrel should be fairly close to the sites you want to water.
- The bottom of your barrel should be elevated at least slightly higher than your watering site, since you'll be reliant on gravity to pressurize any hoses you attach to the bottom of the barrel.
- Make sure your barrel does not impede any access to doors, paths, or equipment such as air conditioning units.

## Step 3 - You want the base of your rain barrel to be nice and level.

Create a stable, flat surface on which your barrel will be placed.

Place your stand on the stable surface you created for your rain barrel.

Place the rain barrel on the stand.



## Step 4 - Mark your downspout.

Using your straight edge, draw a line on your downspout where your diverter will be installed. To accomplish this:

- Spin the rain barrel until the black capped connector is next to the downspout.
- Hold your straight edge level with the black cap on the barrel and use it to draw a line on the downspout.

This way, when your diverter is installed, it will be level with the connector on the barrel. A T-square can help ensure that your line is parallel with the ground.

Remove the barrel from the stand, and move both it and the stand temporarily out of your way.



### Step 5 – Detach the lower portion of the downspout from the house.

Your downspout may be attached to the house with an aluminum wrap or brace. Unscrew the wrap from the lower portion of the downspout (below where you marked your line in Step 4), but leave the wrap attached to the house.

Place the screws in a safe location, as you will need these again later.



### Step 6 – Cut the downspout.

Using your hacksaw, cut along the line you drew on the downspout.

You may want to slip a piece of cardboard behind the downspout to protect your house while you cut.

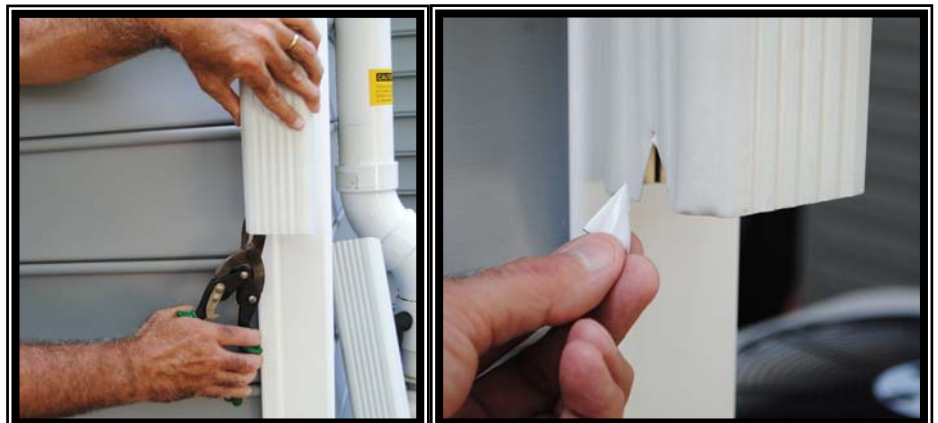
Set aside the bottom portion of your downspout so that it's still within hand's reach.

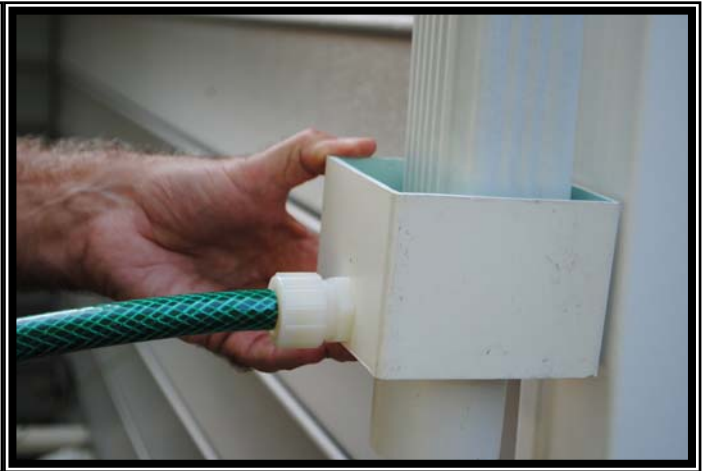
### Step 7 – Snip the top portion of the downspout.

Using your tin snips on the top portion of the downspout, cut a small triangle measuring approximately 1 inch high out of the side downspout (not the front).

Repeat this on both sides of the downspout.

Discard the cut out triangles.





**Step 8 - Fit the diverter to the top portion of the downspout.**

Below the top portion of the downspout (the part that is still connected to the house), orient your diverter so that the hose points towards where the rain barrel will be installed. Fit the diverter into the downspout. The downspout should fit snugly over the round PVC pipe in the diverter.



**Step 9 - Connect the bottom portion of the downspout to the diverter.**

Bring back the bottom portion of the downspout that you had previously set aside, and fit it over the round PVC pipe on the bottom of the diverter.



**Step 10 - Re-attach the bottom portion of the downspout to the house.**

Fit the downspout into the wrap or brace, and replace the screws so that the downspout is once more braced to the house and the diverter is held firmly in place.



**Step 11 - Bring back the rain barrel.**

Replace the stand, and place the barrel on the stand.

Spin the barrel so that the black capped connector (the one you used in Step 4 to mark your downspout) is oriented close to the diverter.



**Step 12 - Connect the diverter to the rain barrel.**

Unscrew the black cap from the rain barrel connector.

Screw the diverter hose onto the rain barrel.

Save the black cap, as you can re-attach this to the diverter hose when you winterize your barrel.



### Step 13 – Make any necessary adjustments.

Adjust the hose so it does not kink. This may require removing the hose from the barrel cap (just slide it off), cutting it to length, and re-attaching it.

### Step 14—Now you're an Eco Champion!

Contact the Wabash River Enhancement Corporation to receive your Eco Champion Sign. You can install these attractive and durable metal signs to help spread the word to your neighbors and community about rain barrels.

### Step 15- Finished.

Congratulations! You've successfully installed your rain barrel. The next time it rains, runoff from your roof should flow from your downspout, through the diverter, and into the barrel. This installation method ensures that once your barrel fills with water to the level of the black connector cap, water will be diverted back into downspout. This prevents the rain barrel from overflowing and water from ponding close to your home.

The diverter and stand featured in these instructions can be purchased from the City of Lafayette Clerk's Office.

If you have questions about installation, or if you would like additional information on:

- Winterizing your rain barrel.
- Daisy chaining barrels (i.e., installing multiple barrels at a single downspout).
- Rain gardens, bio swales, native plantings, and more.

Contact Sara Peel at the Wabash River Enhancement Corporation, [speel@wabashriver.net](mailto:speel@wabashriver.net), or (765) 337-9100. You can also visit [www.tippeconow.com](http://www.tippeconow.com) for additional information on this and other projects in your area.

